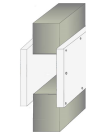
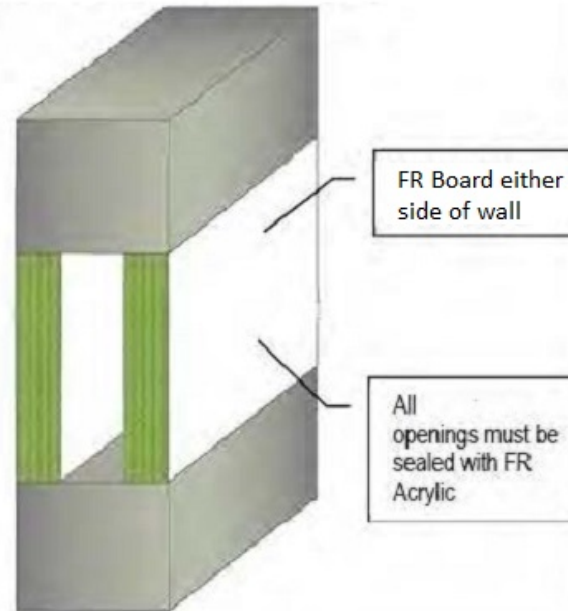


## Protecta FR Board - Concrete Wall min 75mm Blank (1200mm high by Unlimited Width)

Optional Pattress Fit



Smoke-safe (<math><0.1\text{m}^3/\text{h}</math> smoke leakage at 200Pa)



**Pattress Fitting** permitted Max FRR -/120/120 Max aperture 1100 x 1100mm See Warringtonfire FAS200262 page 9

### Installation Instructions

1. Before installing Protecta® FR Board ensure that the surface of all service penetrations and surrounding construction is free from all loose contaminants, dust and grease.
2. The boards should be flush with the surface of the construction on both sides to maximize the fire resistance. For 240min systems, there should be an air gap of at least 30mm between the boards. Otherwise the FR Boards can be back to back. If FR Boards protrude beyond the surface of the wall, any exposed edges should be sealed with Protecta FR Coating.
3. Cut the required board(s) to suit the aperture dimensions. All exposed and cut edges of the board can be sealed with Protecta® FR Acrylic prior to friction fitting which will act as an adhesive and ensure a smoke tight seal.
4. Boards must be friction-fitted or otherwise firmly supported. Then all joints, gaps or imperfections in the installed seal must be filled with Protecta® FR Acrylic on both sides.
5. Protecta® FR Board can be over-painted with most emulsion or alkyd (gloss) paints.

System/FPA Register ID# FC252

<b>Products</b>	Protecta FR Board Protecta FR Acrylic
<b>Application</b>	Fire stopping of blanks in rigid walls
<b>Construction</b>	Minimum wall thickness of 75mm and comprise concrete, aerated concrete or masonry, with a density of $\geq 650 \text{ kg/m}^3$

### Fire & Sound classification

#### 150mm Walls

One 60mm 2-S FR Board each side of wall:  
Blanks of unlimited width and 1200mm height  
FRR -/240/180  
Blanks of 1200mm width and 1200mm height  
FRR -/240/240

#### 100mm Walls

One 60mm 2-S or 50mm 1-S FR Board each side of wall:  
Blanks of unlimited width and 1200mm height  
FRR -/120/120

#### 75mm Walls

One 50mm 1-S FR Board each side of wall:  
Blanks of unlimited width and 1200mm height  
FRR -/60/60

Sound reduction (seal only) STC 55

As a part of our policy of on-going product development and testing, we reserve the right to modify, alter or change product specifications without giving notice. All information contained in this document is given in good faith and is provided for guidance only. Any drawings provided are for illustrative purposes only. As Polyseam has no control over the methods or competence of installation and of prevailing site conditions, no warranties, expressed or implied, is intended to be given as to the actual performance of the product mentioned or referred to herein and no liability whatsoever will be accepted for any loss, damage or injury arising from the use of the information given.

For all technical details on the products specified please refer to the technical data sheets that can be found on [www.firestopcentre.co.nz](http://www.firestopcentre.co.nz)

Signed and approved:

Sheet size: <b>A4</b>	Drawn date & no: 20/4/20
Scale: <b>NTS</b>	Drawn by: G.P